

PART OF LOT 2 REGISTERED PLAN 36

EAST SIDE BARTON STREET

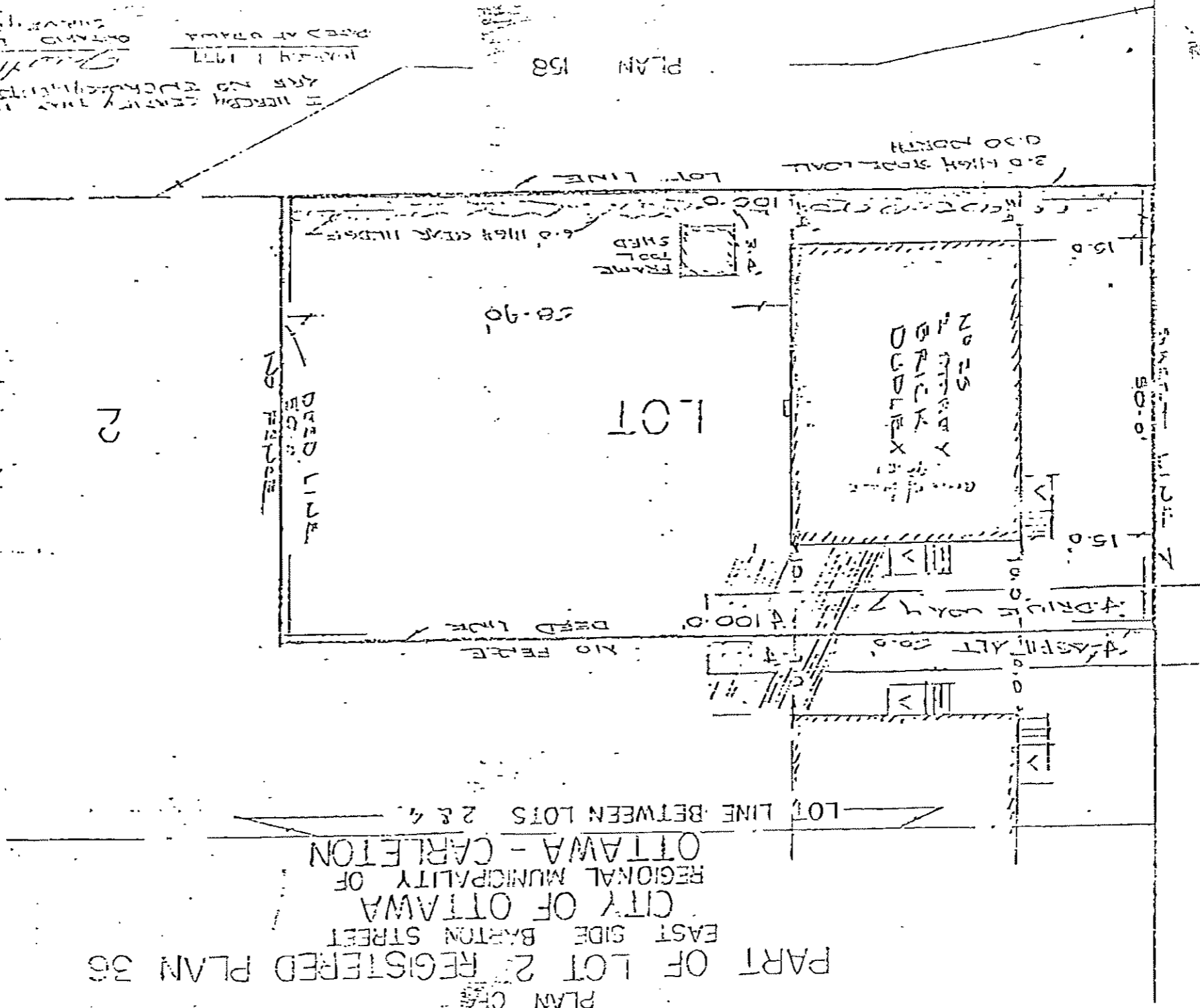
CITY OF OTTAWA

REGIONAL MUNICIPALITY OF

OTTAWA - CARLETON

LOT LINE BETWEEN LOTS 2 & 4

BARTON STREET



PLAN 158
 DATED AT OTTAWA
 MAY 1 1977
 I HEREBY CERTIFY THAT THERE ARE NO ENCUMBRANCES HEREON
 EXCEPT AS SHOWN ON THIS PLAN

FROM OFFICE OF
 FRED H. GOUGH
 ONTARIO LAND SURVEYORS
 230 MACLANE ST.
 OTTAWA 4, ONTARIO
 DATED AT OTTAWA
 MARCH 1 1977

THIS IS EXHIBIT "A" TO THE
 AFFIDAVIT OF KELVIN AND LOUISE TANG
 SWORN BEFORE ME THIS
 DAY OF JANUARY, 1979.
 A COMMISSIONER, ETC.

SCALE 1" = 12'

REV. NO. DT 56-5
 ONTARIO LAND SURVEYORS