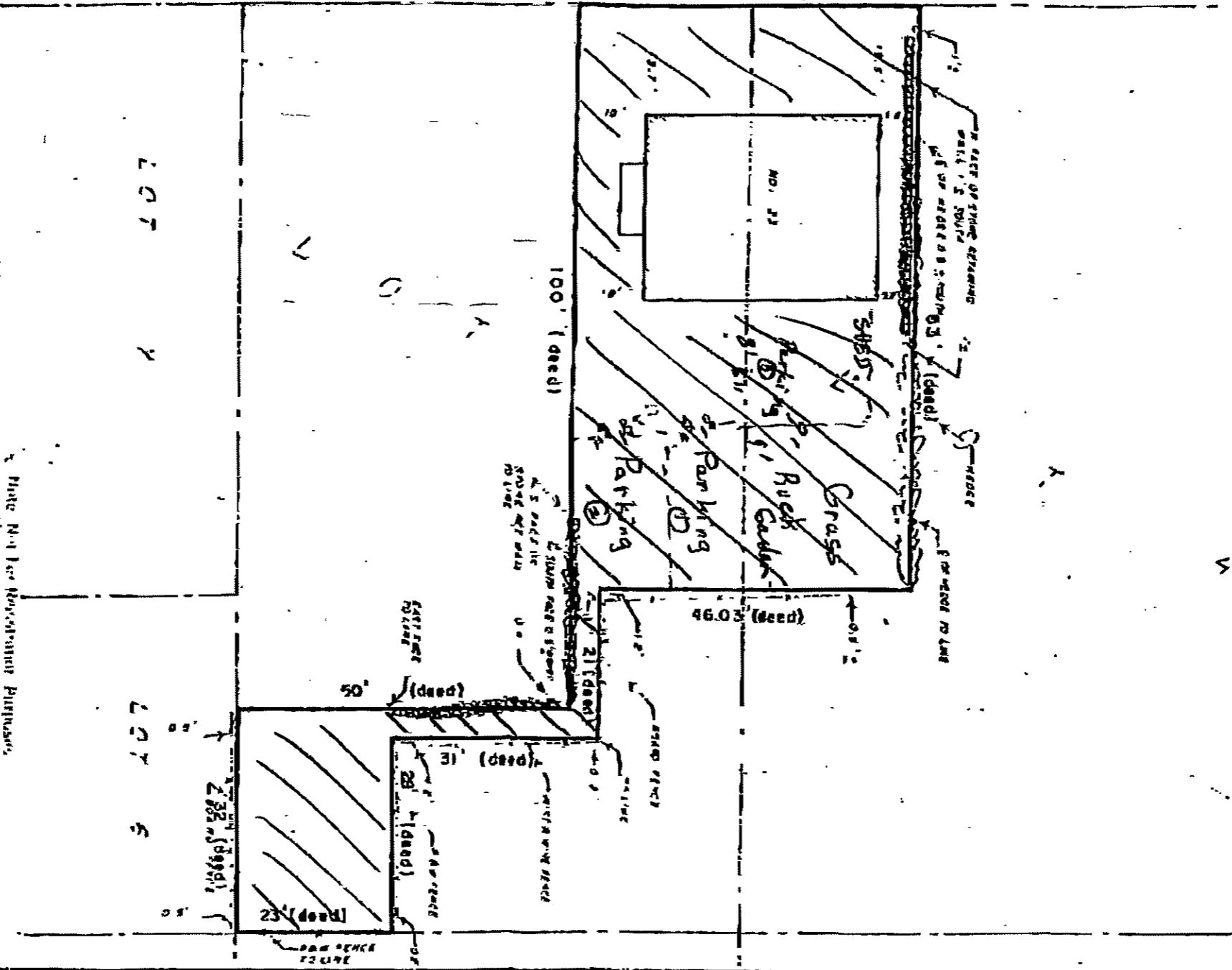


BARTON STREET

50.03' (deed)



BARTON

LEGEND

- (If applicable)
- 1.0 IRON BAR 24" x 1/2"
- 5.1.0 STANDARD IRON BAR 4" x 1"
- (d) - INDICATES CRICE
- (id) - FOUND
- R1.0 1/2" ROUND IRON BAR
- C - CUT CROSS
- N.W. - NAIL B WASHER
- INDICATES HEDGE

Part Not For Construction Purposes.

FARLEY & MARTIN LTD.
 Professional Engineers — Ontario Land Surveyors
 OTTAWA, ONTARIO

PART OF LOTS 2 AND 4 PLAN 36
E. BARTON STREET
CITY OF OTTAWA

Date: AUGUST 31, 1977 Scale: 1" = 20'

Drawn By: *H. S. F. [Signature]*