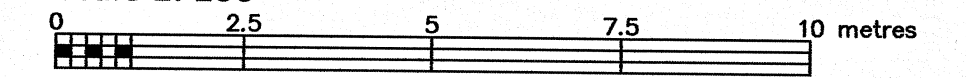


PART OF LOT 71 REGISTERED PLAN 287 CITY OF OTTAWA

FARLEY, SMITH & DENIS SURVEYING LTD. 2021

Scale 1: 100



Metric Note

Distances on this plan are in metres and can be converted to feet by dividing by 0.3048.

Bearing Note

Bearings are grid, are referred to the easterly limit of Mayfair Avenue having a bearing of N 23° 27' 32" W and are referred to the Central Meridian of MTM Zone 9 (76°30' West Longitude) Nad-83 (Original).

For bearing comparisons, a rotation of 0°28'50" counter-clockwise was applied to bearings on P1, P2 & P4.

Elevation Notes

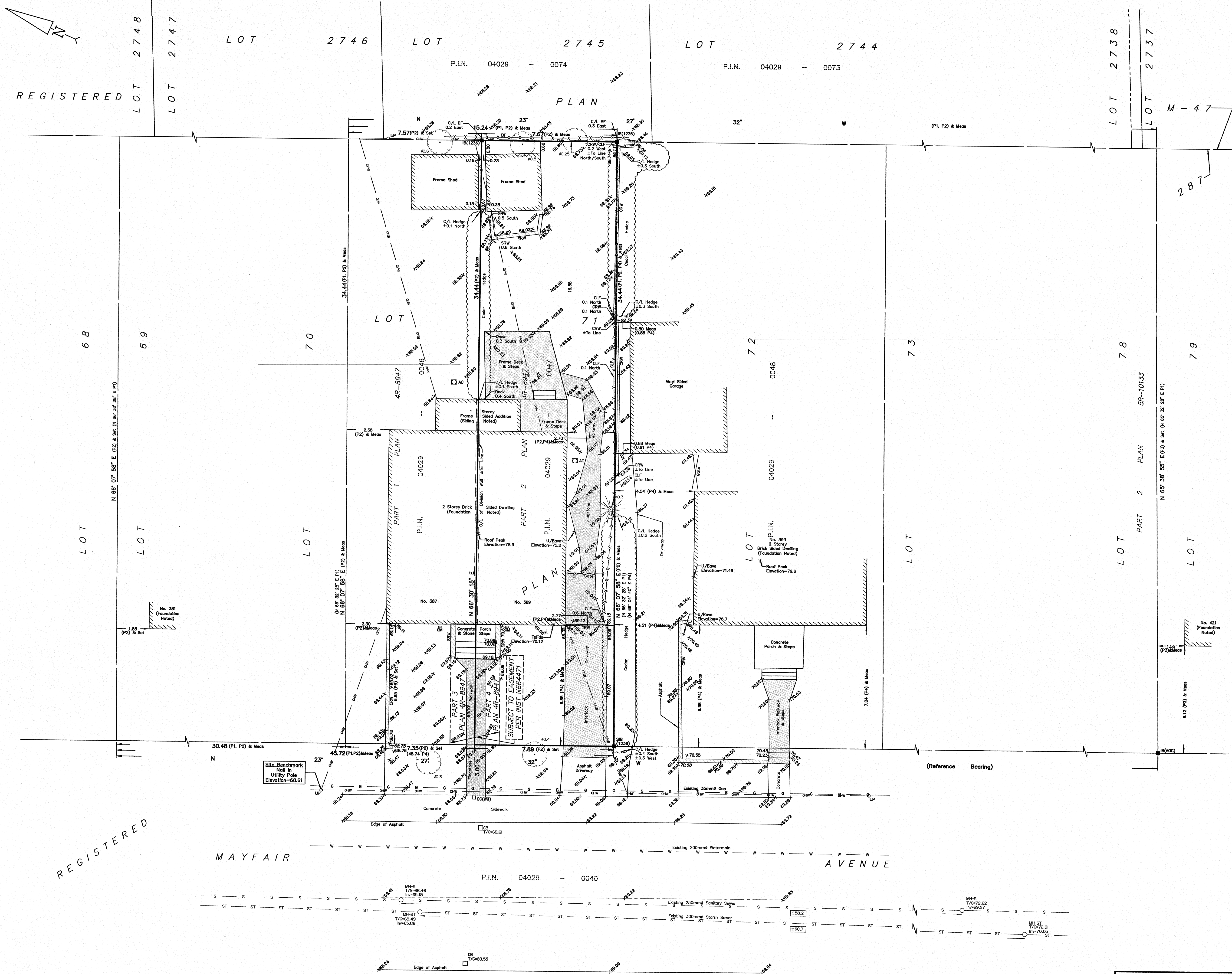
- 1. Elevations shown are geodetic and are referred to Geodetic Datum CGVD-1928 -1978. (See FSD File No. 629-18)
2. It is the responsibility of the user of this information to verify that the job benchmark has not been altered or disturbed and that its relative elevation and description agrees with the information shown on this drawing.

Utility Notes

- 1. This drawing cannot be accepted as acknowledging all of the utilities and it will be the responsibility of the user to contact the respective utility authorities for confirmation.
2. Only visible surface utilities were located.
3. Sanitary and storm sewer grades and inverts were derived from: Field measurement.
4. A field location of underground plant by the pertinent utility authority is mandatory before any work involving breaking ground, probing, excavating etc.

Notes & Legend

Table with 2 columns: Denotes (symbols) and Description (text). Includes symbols for Survey Monument Planted, Survey Monument Found, Standard Iron Bar, Short Standard Iron Bar, Iron Bar, Cut Cross, Witness, Measured, Registered Plan 287, Plan 4R-8947, Plan by (1692) dated December 14, 2018, Plan by (1319) dated November 26, 1987, Plan by (725) dated January 19, 1977, Maintenance Hole (Storm), Maintenance Hole (Sanitary), Underground Storm Sewer, Underground Sanitary Sewer, Underground Water, Underground Gas, Overhead Wires, Utility Pole, Catch Basin, Gas Meter, Air Conditioner, Diameter, Chain Link Fence, Board Fence, Concrete Retaining Wall, Stone Retaining Wall, Timber Retaining Wall, Invert, Top of Grate, Underside of Eave, Top of Foundation, Centreline, Location of Elevations, Top of Retaining Wall Elevation, Property Line, Deciduous Tree, and Coniferous Tree.



WARNING NO PERSON MAY COPY, REPRODUCE, DISTRIBUTE OR ALTER THIS PLAN IN WHOLE OR IN PART WITHOUT THE WRITTEN PERMISSION OF FARLEY, SMITH & DENIS SURVEYING LTD. © FARLEY, SMITH & DENIS SURVEYING LTD., 2021.

Surveyor's Certificate section containing a declaration of accuracy, date (Oct 21/21), signature of Jamie Leslie, and the company name FARLEY, SMITH & DENIS SURVEYING LTD. Includes the Association of Ontario Land Surveyors logo and a warning that the plan is not valid unless it is an embossed original copy.