

REQUIRE THIS PLAN TO BE DEPOSITED UNDER THE REGISTRY ACT  
 DATE JAN. 23, 1988  
 RECEIVED AND DEPOSITED  
 DATE JAN. 25, 1988  
 PLAN 5R-4813  
 CHARLES W. FAIRHALL  
 O.T.A. 1000  
 O.T.A. 1000  
 O.T.A. 1000

PLAN OF SURVEY OF  
 PART OF LOTS 4, 5 AND 6  
 REGISTERED PLAN N<sup>o</sup> 13  
 CITY OF OTTAWA  
 REGIONAL MUNICIPALITY OF OTTAWA-CARLETON

SCALE 1:125  
 METRES  
 CHARLES W. FAIRHALL, O.L.S.  
 1980

METRIC MEASUREMENTS SHOWN ON THIS PLAN ARE IN METRES AND MAY BE CONVERTED TO FEET BY DIVIDING BY 0.3048

SURVEYOR'S CERTIFICATE

I, THE SURVEYOR, HAVE CORRECTED AND IN ACCORDANCE WITH THE SURVEY ACT AND THE REGISTRY ACT AND THE REGULATIONS MADE THEREUNDER, THE SURVEY WAS COMPLETED ON THE 7th DAY OF JANUARY, 1980.

JAN. 10, 1980  
 CHARLES W. FAIRHALL  
 O.T.A. 1000  
 O.T.A. 1000  
 O.T.A. 1000

NOTES  
 1. BEARINGS SHOWN HEREON ARE ASTROMERIC, DERIVED FROM THE NORTHERLY LIMIT OF PART 3, PLAN 5R-4472, SHOWN TO HAVE A BEARING OF N68°26'30"E SYSTEM BEING 78°20'30" W LONGITUDE.

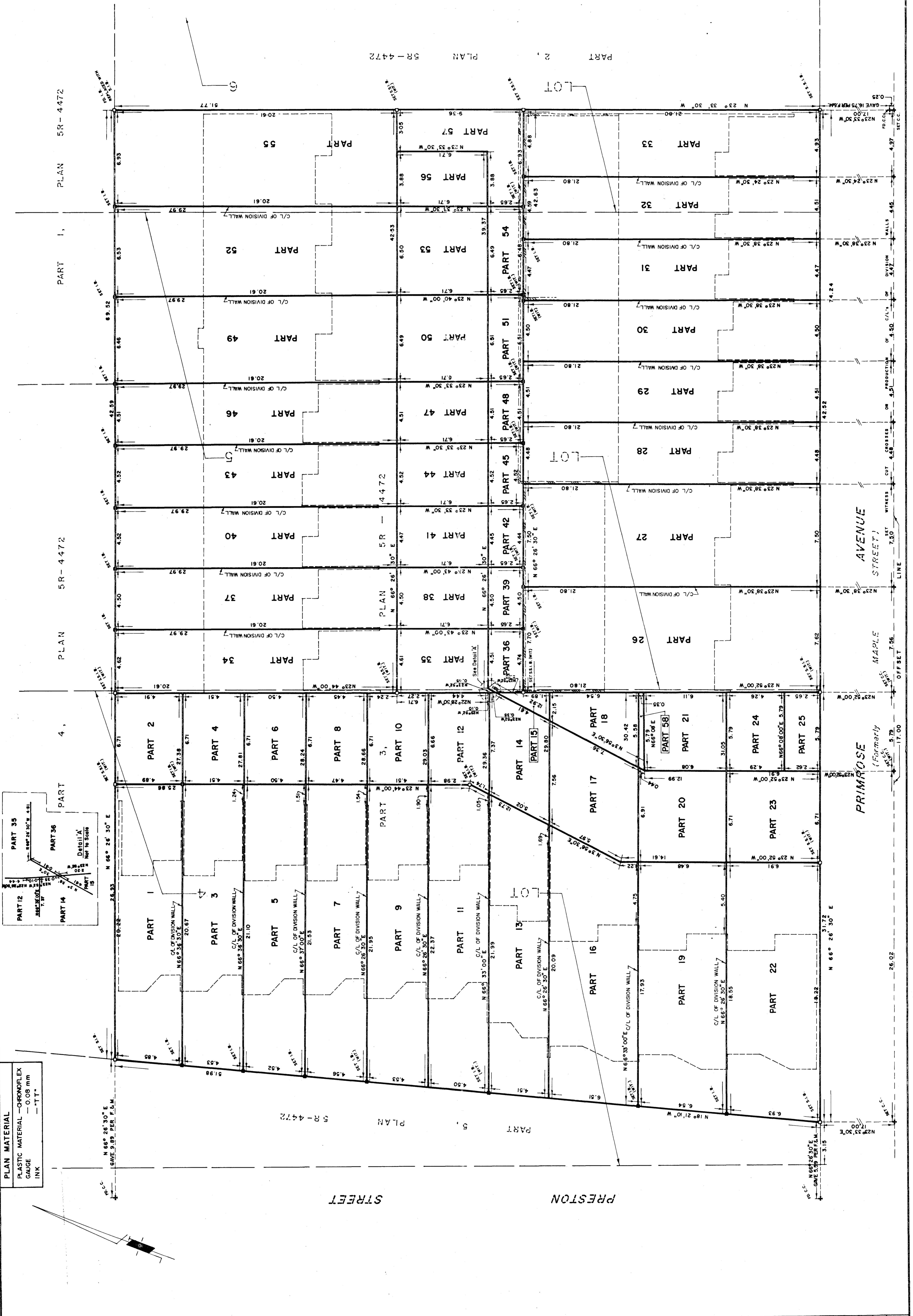
- LEGEND  
 S.I.R. DENOTES STANDARD IRON BAR  
 S.S.I.R. DENOTES SHORT STANDARD IRON BAR  
 I.R.B. DENOTES IRON BAR  
 C.C. DENOTES CUT CROSS  
 P.D. DENOTES POUND  
 W.T. DENOTES WITNESS  
 F.A.M. DENOTES FAIRHALL & MOFFATT LIMITED

EXAMINER OF SURVEYS CERTIFICATE  
 APPROVED NOTWITHSTANDING NON-COMPLIANCE WITH REGULATION 807 (AS TO MONUMENTATION)  
 25 JAN 1980  
 DATE

ASSISTANT EXAMINER OF SURVEYS

CAUTION  
 THIS PLAN IS NOT A PLAN OF SUBDIVISION WITHIN THE MEANING OF THE PLANNING ACT.

FAIRHALL & MOFFATT LIMITED  
 O.T.A. 1000  
 O.T.A. 1000  
 O.T.A. 1000



SCHEDULE					
PART	LOT	REGD. PLAN	INST. N <sup>o</sup>	AREA IN SQ. METRES	REMARKS
1	4	13	NS.66582	99.4	Part of PART 3, 5R-4472
2	4	13	NS.66582	32.9	Part of PART 3, 5R-4472
3	4	13	NS.66582	94.2	Part of PART 3, 5R-4472
4	4	13	NS.66582	30.3	Part of PART 3, 5R-4472
5	4	13	NS.66582	95.9	Part of PART 3, 5R-4472
6	4	13	NS.66582	30.2	Part of PART 3, 5R-4472
7	4	13	NS.66582	97.9	Part of PART 3, 5R-4472
8	4	13	NS.66582	29.9	Part of PART 3, 5R-4472
9	4	13	NS.66582	100.0	Part of PART 3, 5R-4472
10	4	13	NS.66582	30.2	Part of PART 3, 5R-4472
11	4	13	NS.66582	101.0	Part of PART 3, 5R-4472
12	4	13	NS.66582	30.6	Part of PART 3, 5R-4472
13	4	13	NS.66582	94.1	Part of PART 3, 5R-4472
14	4	13	NS.66582	33.6	Part of PART 3, 5R-4472
15	4	13	NS.66582	4.4	Part of PART 3, 5R-4472
16	4	13	NS.66582	121.8	Part of PART 3, 5R-4472
17	4	13	NS.66582	48.9	Part of PART 3, 5R-4472
18	4	13	NS.66582	25.3	Part of PART 3, 5R-4472
19	4	13	NS.66582	118.5	Part of PART 3, 5R-4472
20	4	13	NS.66582	43.5	Part of PART 3, 5R-4472
21	4	13	NS.66582	35.3	Part of PART 3, 5R-4472
22	4	13	NS.66582	130.5	Part of PART 3, 5R-4472
23	4	13	NS.66582	46.4	Part of PART 3, 5R-4472
24	4	13	NS.66582	24.8	Part of PART 3, 5R-4472
25	4	13	NS.66582	15.3	Part of PART 3, 5R-4472
26	4 8 5	13	NS.66582	167.0	Part of PART 3, 5R-4472
27	5	13	NS.66582	163.5	Part of PART 3, 5R-4472
28	5	13	NS.66582	97.7	Part of PART 3, 5R-4472
29	5	13	NS.66582	98.3	Part of PART 3, 5R-4472
30	5	13	NS.66582	98.1	Part of PART 3, 5R-4472
31	5	13	NS.66582	97.4	Part of PART 3, 5R-4472
32	5 8 6	13	NS.66582	99.2	Part of PART 3, 5R-4472
33	6	13	NS.66582	106.9	Part of PART 3, 5R-4472
34	4 8 5	13	NS.66582	95.1	Part of PART 3, 5R-4472
35	4 8 5	13	NS.66582	31.5	Part of PART 3, 5R-4472
36	4 8 5	13	NS.66582	12.5	Part of PART 3, 5R-4472
37	5	13	NS.66582	92.7	Part of PART 3, 5R-4472
38	5	13	NS.66582	30.2	Part of PART 3, 5R-4472
39	5	13	NS.66582	11.9	Part of PART 3, 5R-4472
40	5	13	NS.66582	92.6	Part of PART 3, 5R-4472
41	5	13	NS.66582	29.9	Part of PART 3, 5R-4472
42	5	13	NS.66582	11.8	Part of PART 3, 5R-4472
43	5	13	NS.66582	93.2	Part of PART 3, 5R-4472
44	5	13	NS.66582	30.3	Part of PART 3, 5R-4472
45	5	13	NS.66582	12.0	Part of PART 3, 5R-4472
46	5	13	NS.66582	93.0	Part of PART 3, 5R-4472
47	5	13	NS.66582	30.3	Part of PART 3, 5R-4472
48	5	13	NS.66582	12.0	Part of PART 3, 5R-4472
49	5	13	NS.66582	133.5	Part of PART 3, 5R-4472
50	5	13	NS.66582	43.6	Part of PART 3, 5R-4472
51	5	13	NS.66582	17.2	Part of PART 3, 5R-4472
52	5 8 6	13	NS.66582	134.2	Part of PART 3, 5R-4472
53	5 8 6	13	NS.66582	43.6	Part of PART 3, 5R-4472
54	5 8 6	13	NS.66582	17.2	Part of PART 3, 5R-4472
55	6	13	NS.66582	142.8	Part of PART 3, 5R-4472
56	6	13	NS.66582	26.0	Part of PART 3, 5R-4472
57	6	13	NS.66582	38.8	Part of PART 3, 5R-4472
58	4	13	NS.66582	2.1	Part of PART 3, 5R-4472